

WE PROMISE YOUR SATISFACTION

Technical consideration first behind it.

Outline

NARAAUTOSYS

• **Establishment** Oct. 02, 1977

• **Product** Shaft Flexible Coupling, Planetary Gear Reducer,
Variable Speed Fluid Coupling

• **Customer** Public Energy institutions, KDHC, HD HHI, Doosan Enerbility,
HYOSUNG GOODSPRINGS, POSCO, STX Engine, HD HYUNDAI SAMHO,
Hanwha Aerospace, Hanwha Engine, HD Hyundai Electric, Mitsui,
Mitsubishi, Kawasaki, Ebara Pump, Torishima Pump, CDBMB(Rosatom),
GE, NTPC, BHEL, NSE



1st factory: Jisa (23,000m²)



2nd factory: MyungJi (7,000m²)

History

NARA AUTOSYS

2024.

Change of company name to "NARA Autosys Co.,Ltd."

2022.

Export of Integral Gear-Type Variable Speed Fluid Couplings for Nuclear Power Plant (8MW,5800rpm)
Certificate of Designation Small Giant Company of Korea

2021.

2020.

Developed High-efficiency Gear Transmission (6,000rpm)

2019.

Developed Variable Speed Fluid Coupling-intergrated with two Stage Step-up Gear(Over 10,000rpm)

2019.

Awarded the Prime Minister's Commendation at the KOREA SMEs INNOVATIVE SHOW

2014.

Certificate the API Q1

2012.

Prime Minister's Award for Technological Commercialization.
(Variable Speed Fluid Coupling)

2010.

Certified HS Coupling for Wind Turbine by Windtec

2009.

Developed , Geared Variable Speed Fluid Coupling
(For Energy generation BFP, 6000rpm)

2009.

Awarded 'EXPORT 5,000,000USD'

2000.

Change of company name to "NARA Corporation"
Developed and supplied Gear Couplings for railroad vehicles

1997.

Supplied Planetary Reducer for Marine Engine

1996.

Developed Variable Speed Fluid Coupling (1800rpm)

1986.

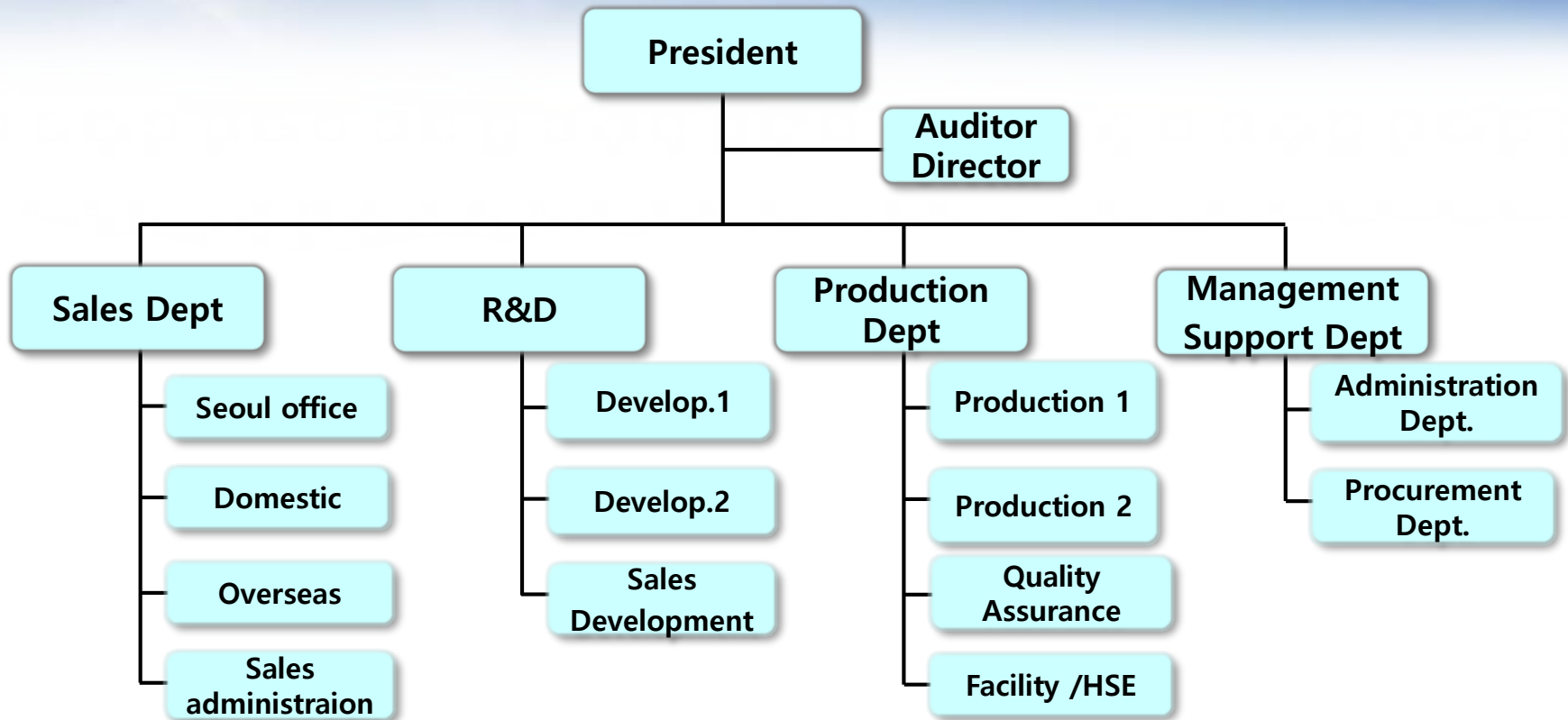
Developed Fluid Coupling

1977.

"NARA Transmission Company" established Produced, Shaft Coupling for Power Transmission

Organizational chart

NARAAUTOSYS



Dept .	Sales	R&D	Production	Management	Total
Count	19	14	67	11	111

Coupling

- Flexible Shaft Coupling
- Fluid Coupling
- Variable Speed Coupling

Reducer

- Planetary reducer for Marine
- Planetary Gear Reducer

Precision Component

- K9 FOR TANK ENGINE
- K1 HYDRAULIC VALVE FOR TANK DRIVING



Flexible Shaft Coupling

NARAAUTOSYS



**WIRE DRUM
COUPLING**



**COUPLING
For Rail Car**



**FLUID
COUPLING**



**GEAR
COUPLING**



**DISC
COUPLING**



**JAW
COUPLING**



**CHAIN
COUPLING**



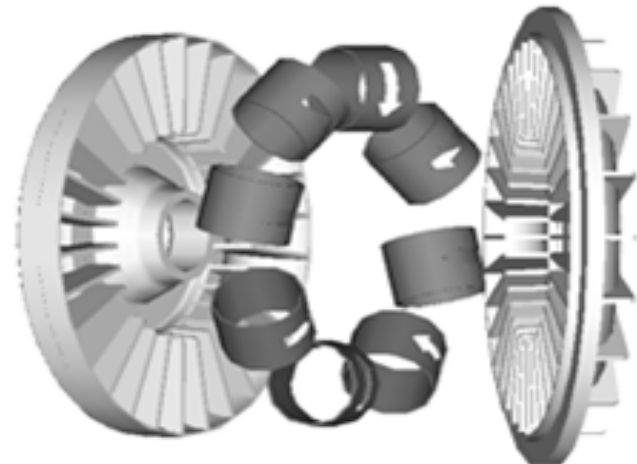
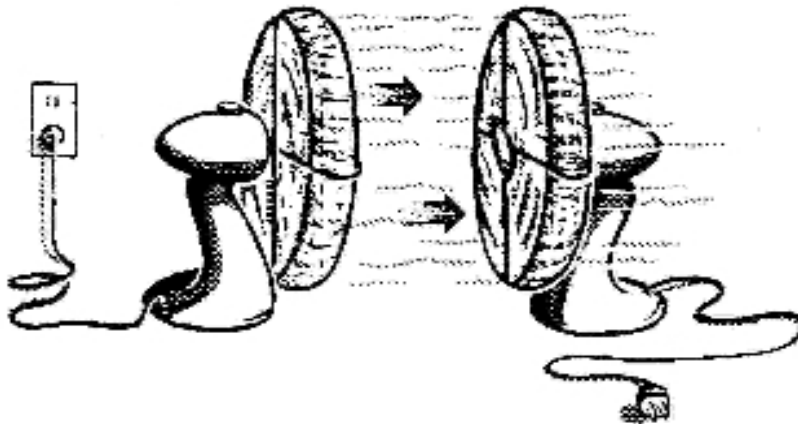
**FLANGE FLEXIBLE
COUPLING**

Fluid Coupling

NARAAUTOSYS

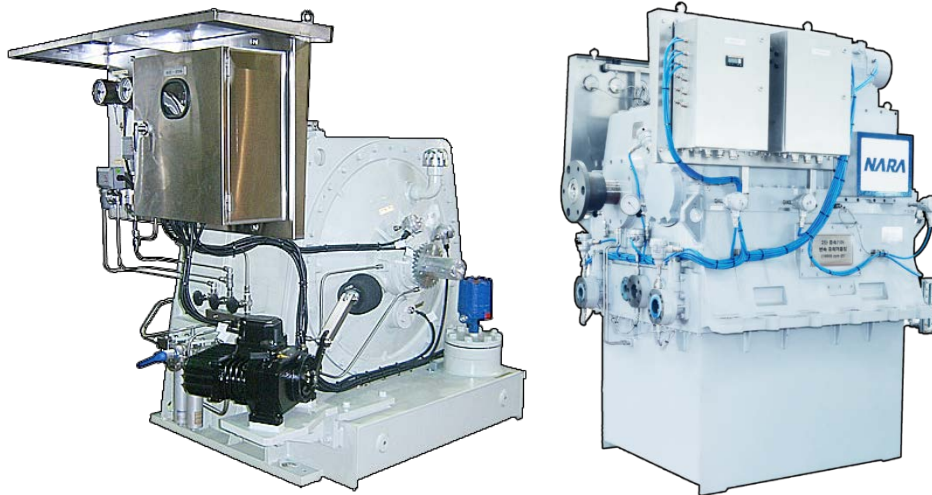
Principle

- Hydrokinetic application
- Combined Impeller and Runner



Variable speed fluid coupling

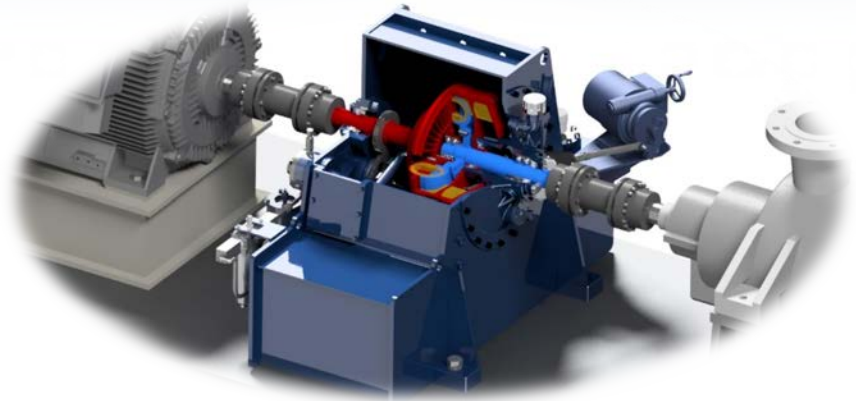
NARAAUTOSYS



SPEC.

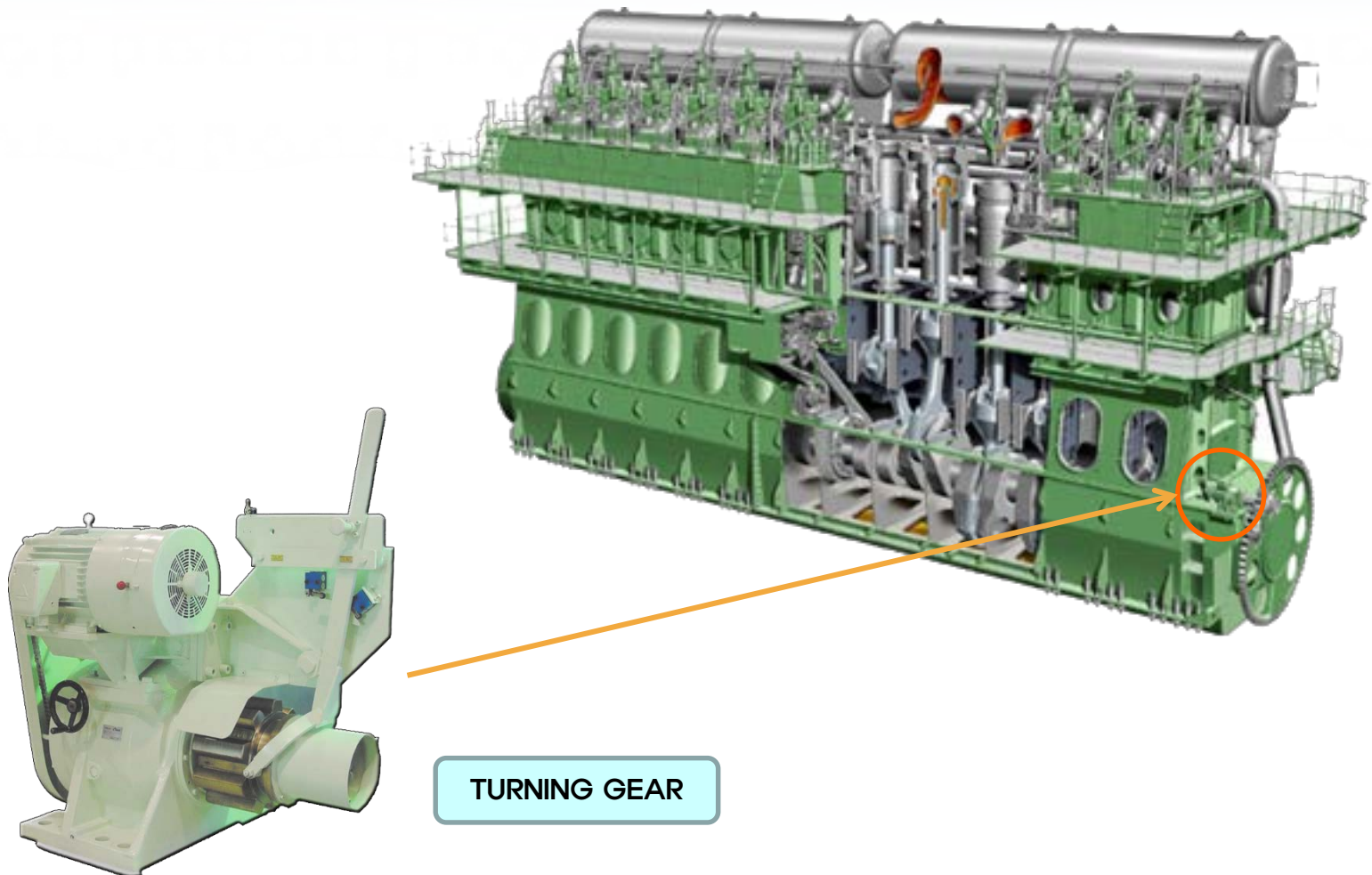
POWER : ~14000 kW

SPEED : ~15000 rpm



Marine Engine

NARAAUTOSYS



Precision Components [Military]

NARAAUTOSYS



**K9 FLUID COUPLING
FOR TANK ENGINE**



**HYDRAULIC VALVE
FOR TANK DRIVING**

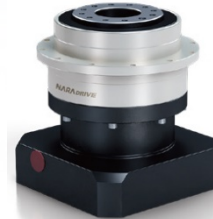
Precision Planetary reducer [Automation System]

NARAAUTOSYS



NP series

- High-precision, Low-noise, Helical gear
- Inline type



NF series

- High-precision, Low-noise, Helical gear
- Flange type



NX series

- High-precision, Low-noise, Helical gear
- Fixed tapped type



NPR series

- High-precision, Low-noise, Helical gear
- Right angle type



NFR series

- High-precision, Low-noise, Helical gear
- Flange angle type



NZ series

- High-precision, Low-noise, Helical gear
- Compact design

SMART COUPLING

[Automation System]

NARAAUTOSYS



DISC

- High Torsional Stiffness
- Loss Mass of Moment of Inertia



JAW

- Backlash-Free
- High Torque



HELICAL

- High Allowable Misalignment
- Loss Mass of Moment of Inertia



OLDHAM

- Compensation for High Misalignment

Capacity

NARA AUTOSYS

ITEM	SPEC.				CAPA / YEAR
	TYPE	MAX.O.D.	KW / RPM	MAX. TORQUE	(SET)
GEAR COUPLING	SSM100~CCM1600	Ø1,600	/ 5,000	454,000kgf·m	50,000
DISK COUPLING	PS405~PS845	Ø600	/ 10,000	8,530kgf·m	50,000
JAW COUPLING	NJ016~NJ100	Ø200	/ 5,000	245kgf·m	100,000
FLUID COUPLING	8K~34K	Ø1,000	/ 3,600	-	5,000
VSFC (Variable Speed Fluid Coupling)	NVC366~NVCH1250	Ø1,450	4,500kW / 3,600 rpm	-	200
	NGC 680	Ø750	8,000kW / 10,000 rpm	-	
Precision Planetary reducer	NP042~NP220	Ø220	50kW / 3,000 rpm	-	70,000

Main certifications

No.	Certification	Scope	YEAR	Certification Authority
1	QUALITY MANAGEMENT SYSTEM ISO 9001	Shaft Cuplings, Reducers, etc	2014	SDI
2	ENVIRONMENTAL MANAGEMENT SYSTEM ISO 14001	Shaft Cuplings, Reducers, etc	2019	SDI
3	OCCUPATIONAL HEALTH AND SAFETY MANAGEMENT SYSTEM ISO 45001	Shaft Cuplings, Reducers, etc	2022	SDI
4	EQ QUALITY	Reducer for Marine	2020	KCCI
5	Safety Certificate	Gear coupling	2022	KORAIL
6	Inno-BIZ	Inno-Biz G. A	2023	Ministry of SMEs and Startups
7	Designation Small Giant Company of Korea	NARA CORPORATION	2020	Ministry of SMEs and Startups